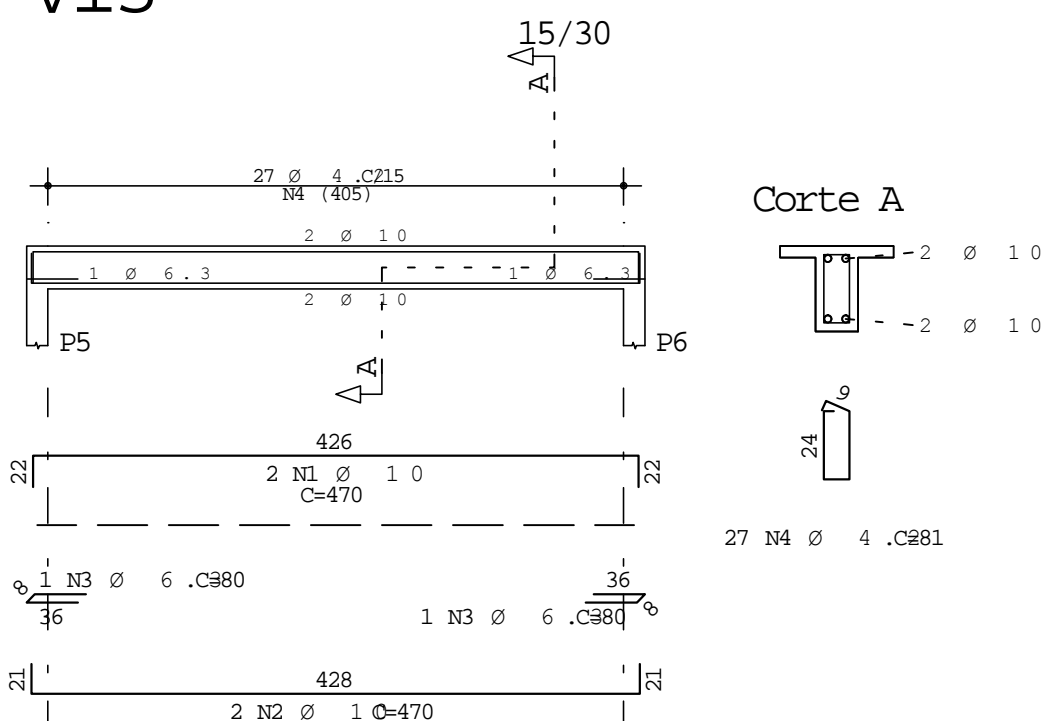
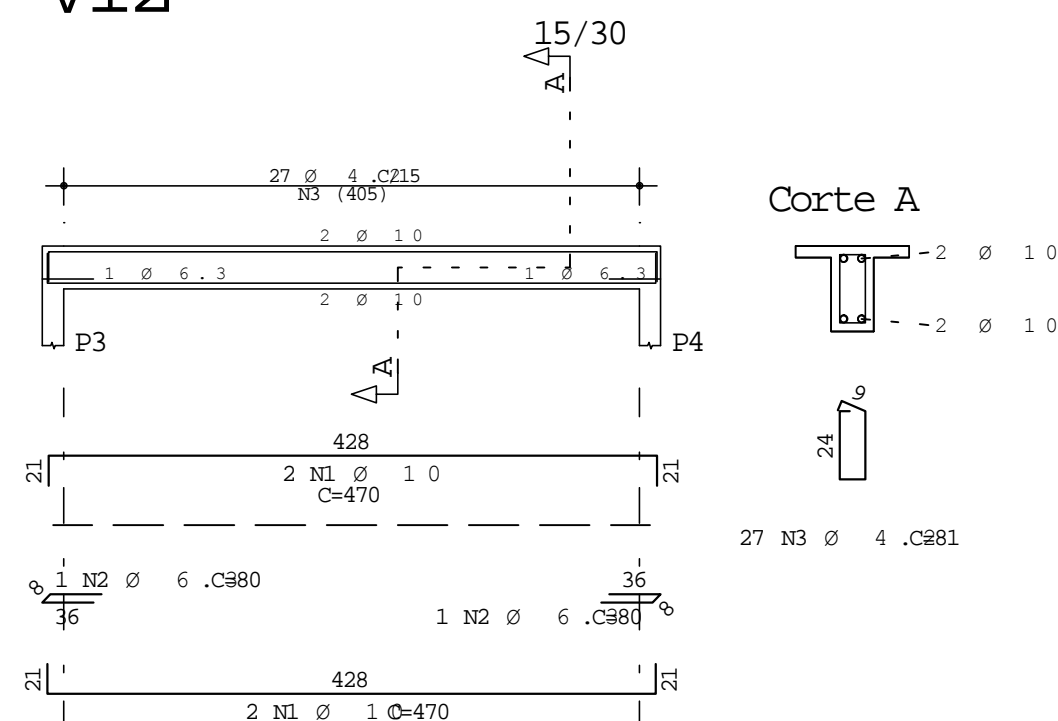


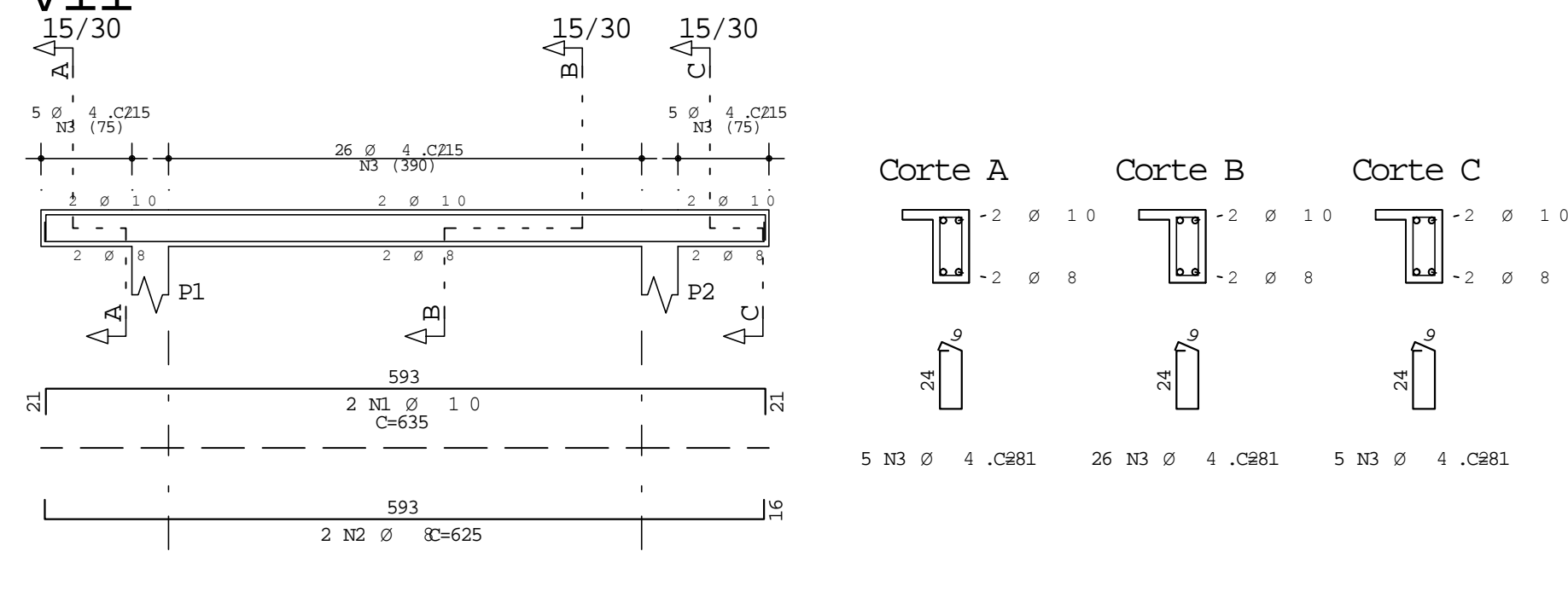
V13



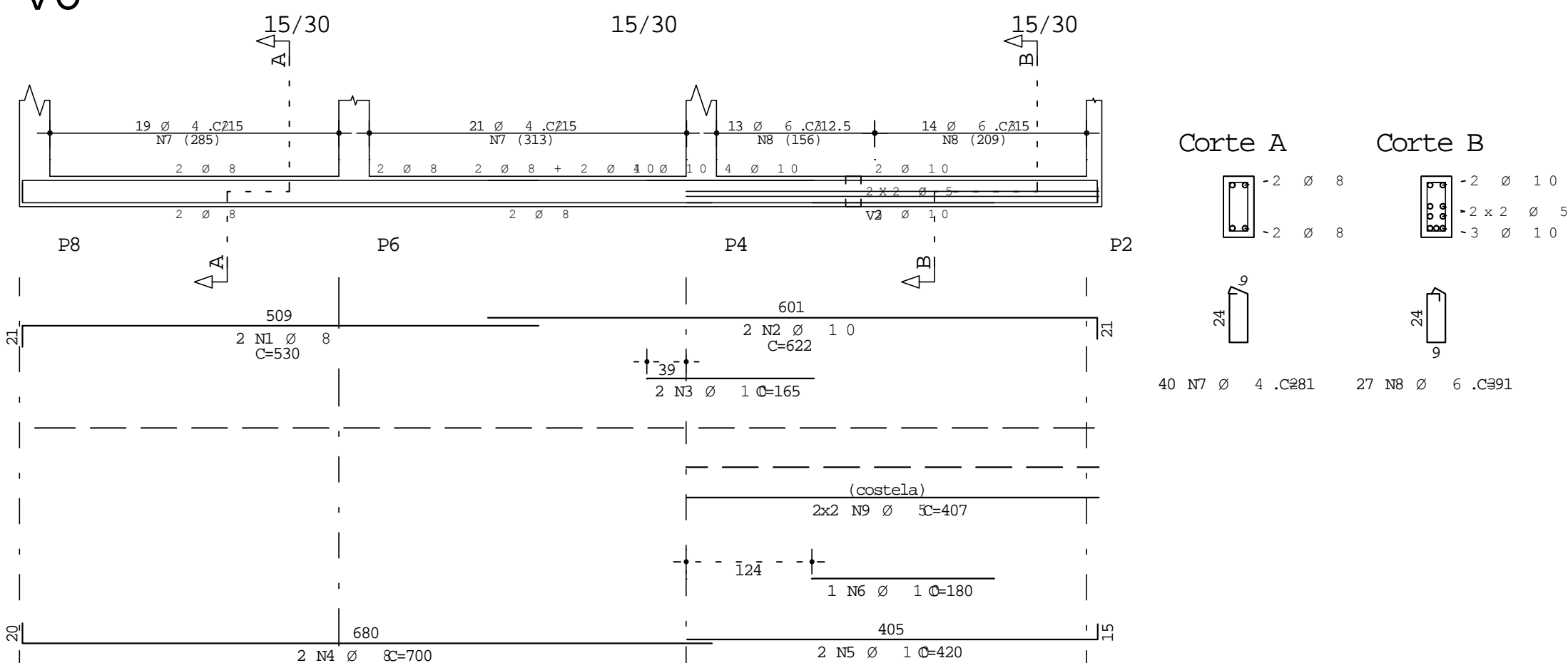
v12



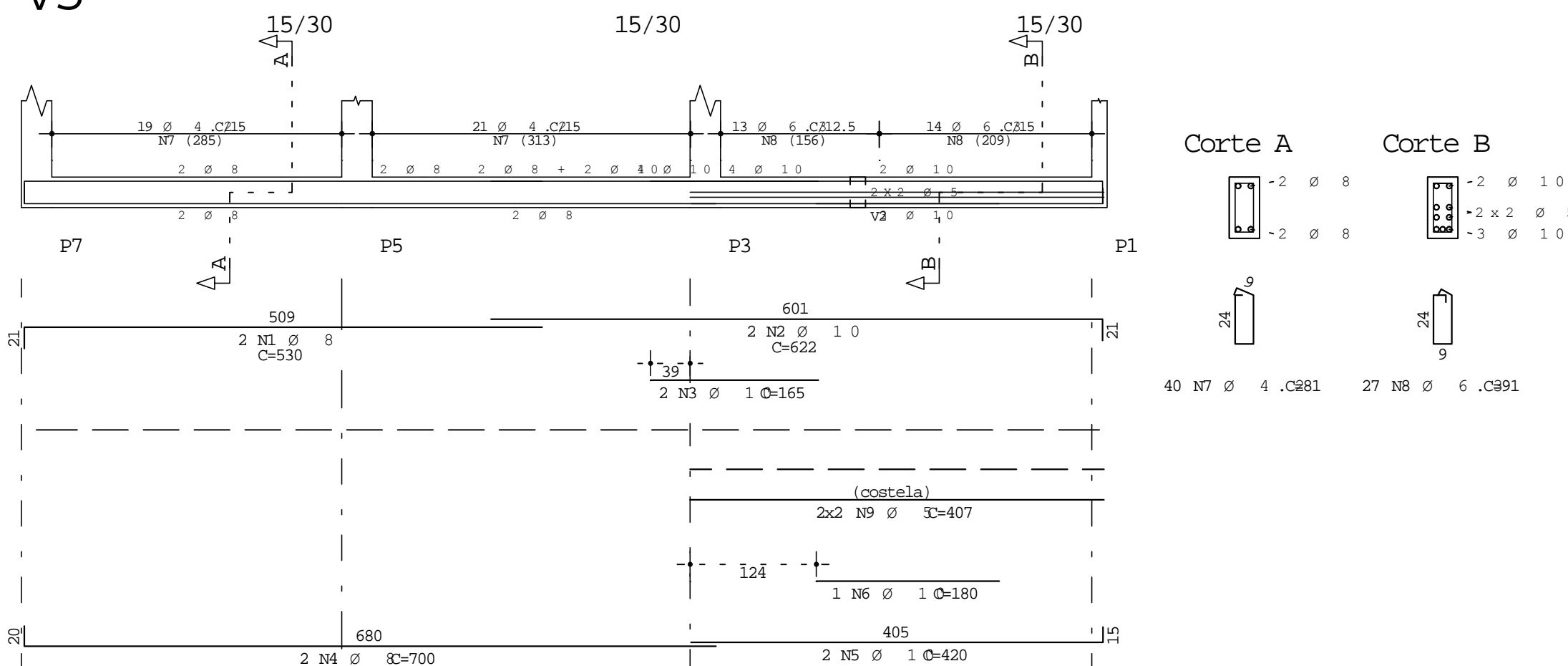
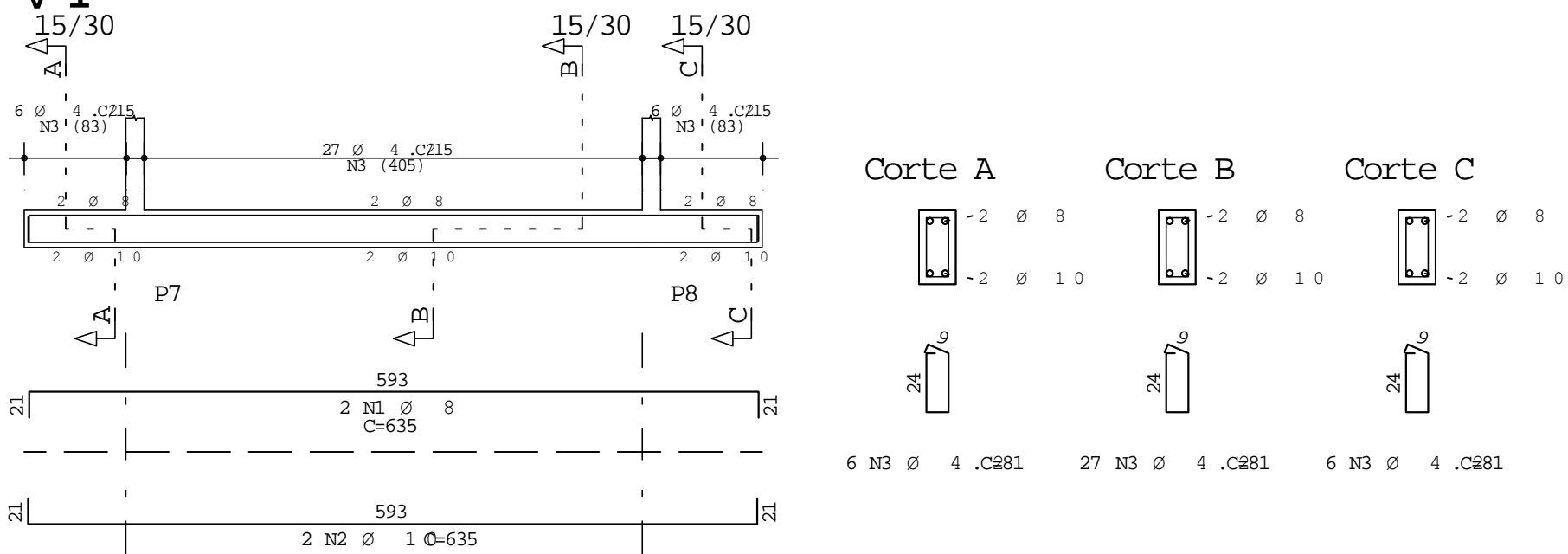
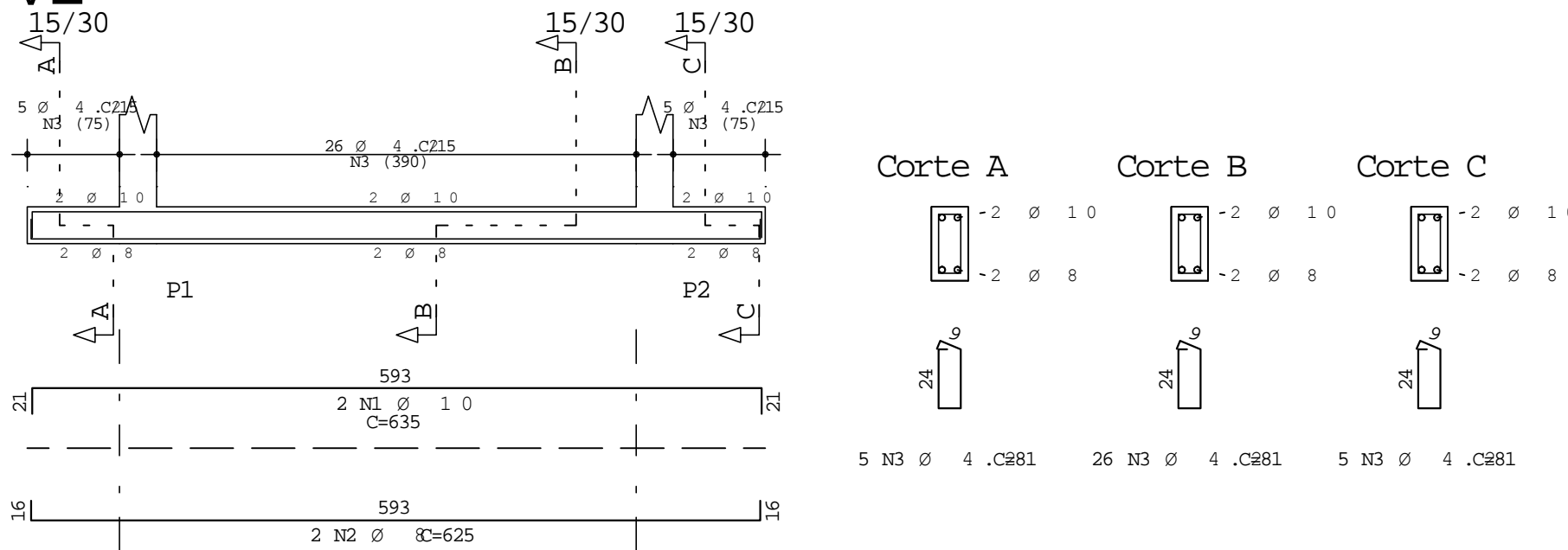
V11



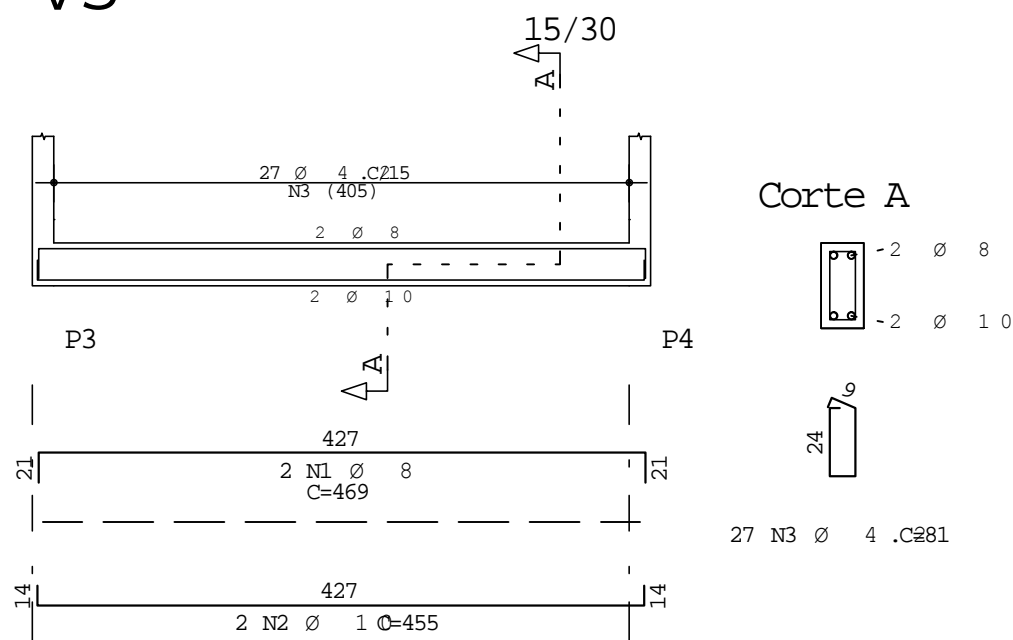
V6



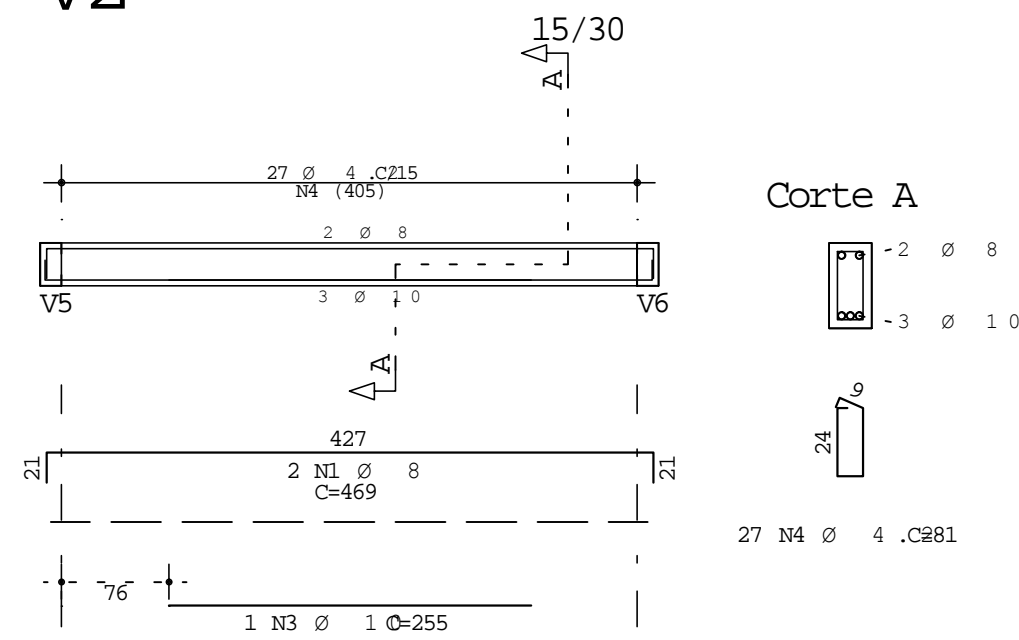
V5

V4
15/2V1
15/2

V3



V2



	A	C	POS	BIT (mm)	QUANT	COMPLEMENTO	
						(cm)	TOTAL (cm)
V1	50A	1	8	2	635	1270	
	50A	2	8	2	625	1250	
	60B	3	4, 2	36	81	2916	
V2	50A	1	8	2	469	938	
	50A	2	10	2	455	910	
	50A	3	8	1	255	255	
V3	60B	4	4, 2	27	81	2187	
	50A	1	8	2	469	938	
	50A	2	10	2	455	910	
V4	60B	3	4, 2	27	81	2187	
	50A	1	8	2	635	1270	
	50A	2	10	2	635	1270	
V5	60B	3	4, 2	39	81	3159	
	50A	1	8	2	530	1060	
	50A	2	10	2	622	1244	
V6	50A	3	8	2	165	330	
	50A	4	8	2	700	1400	
	50A	5	10	2	420	840	
V7	50A	6	8	1	180	180	
	50A	7	4, 2	40	81	3240	
	50A	8	6, 3	27	91	2457	
V8	60B	9	5	4	407	1628	
	50A	1	8	2	530	1060	
	50A	2	10	2	622	1244	
V9	50A	3	10	2	165	330	
	50A	4	8	2	700	1400	
	50A	5	10	2	420	840	
V10	50A	6	10	1	180	180	
	60B	7	4, 2	40	81	3240	
	50A	8	6, 3	27	91	2457	
V11	60B	9	5	4	407	1628	
	50A	1	10	2	635	1270	
	50A	2	8	2	625	1250	
V12	60B	3	4, 2	36	81	2916	
	50A	1	10	4	470	1880	
	50A	2	6, 3	2	80	160	
V13	60B	3	4, 2	27	81	2187	
	50A	1	10	2	470	940	
	50A	2	10	2	470	940	
V14	50A	3	6, 3	2	80	160	
	60B	4	4, 2	27	81	2187	
	50A	5	8	2	470	940	

RESUMO AÇO CA 50 -			
AÇO	BITT	COMPR	PESO
	(mm)	(m)	(kg)
60B	4.2	242	26
60B	5	33	5
50A	6.3	52	13
50A	8	106	42
50A	10	148	92
Peso Total	60B =		31 kg
Peso Total	50A =		146 kg

	Eixo	Faces
Volume de concreto de VIGAS (m3)	2.5	2.3
Taxa de armadura (kg/m3)	70.8	75.9

					CREA N.º 0001
CLIENTE UFENP CLM					DES. N.º TRU
CREA N I T E C - A M P L I A Ç Ã O					01 /2
TÍTULO ESTRUTURAL					REV. N.º
V1 / V2 / V3 / V4 / V5 V6 / V11 / V12 / V13					
DATA 20/10/2018	ESCALA 1:50	FCK 250	DESENHO	VEDUP.	REV. 0